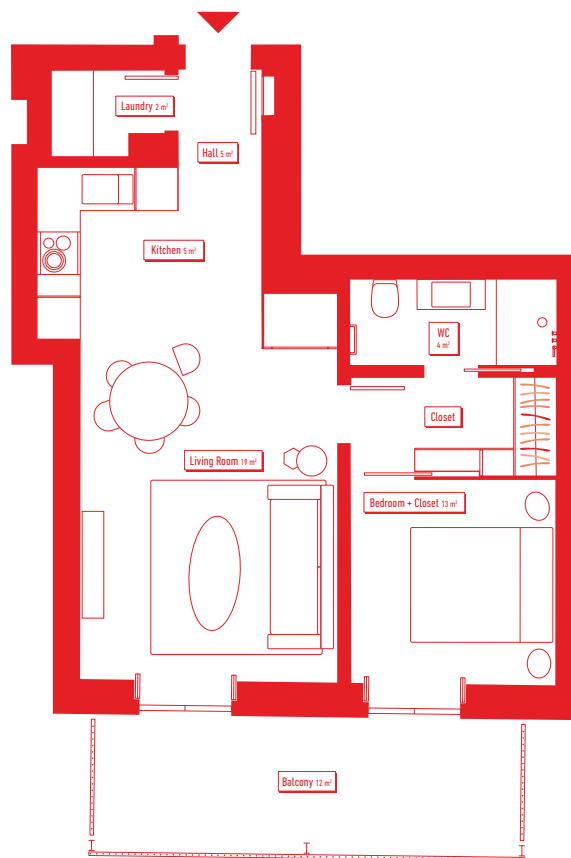


SANTA CLARA

PALÁCIO



APARTMENT 5 • T1 • FLOOR 1

GROSS INTERIOR AREA*
56 m²

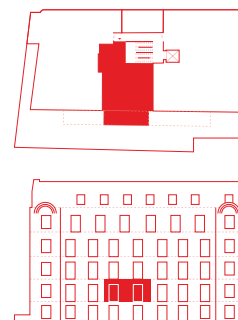
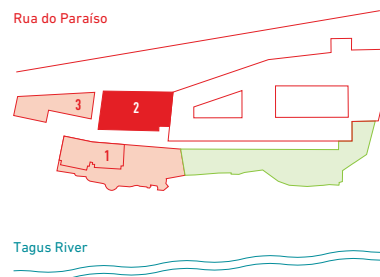
PARKING
Yes

EXTERIOR GROSS AREA*
12 m²

STORAGE ROOM
Yes

TOTAL AREA*
68 m²

1. Palácio de Santa Clara I
2. Palácio de Santa Clara II
3. Palácio de Santa Clara III



WITHOUT SCALE

All elements in this document are merely an indication, may be altered and do not hold legally. The developer reserves the right to freely make alterations to the dimensions and equipments in accordance to the technical limitations of the construction. GROSS INTERIOR AREA calculated in accordance to Portuguese Legislation.

*Areas indicated in the interior of the apartment compartments refer to approximate net areas. Total net area: 46,66 m²



WWW.STONECAPITAL.PT



WWW.LIBERTAS.PT