

SANTA CLARA

PALÁCIO



4

APARTMENT 14 • T3 DUPLEX • FLOOR 4 & 5

GROSS INTERIOR AREA*
214 m²

PARKING
Yes

EXTERIOR GROSS AREA*
57 m²

STORAGE ROOM
Yes

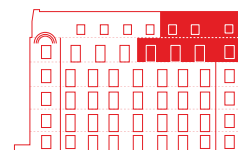
TOTAL AREA*
271 m²

1. Palácio de Santa Clara I
2. Palácio de Santa Clara II
3. Palácio de Santa Clara III

Rua do Paraíso



Tagus River



WITHOUT SCALE

All elements in this document are merely an indication, may be altered and do not hold legally. The developer reserves the right to freely make alterations to the dimensions and equipments in accordance to the technical limitations of the construction. GROSS INTERIOR AREA calculated in accordance to Portuguese Legislation.



WWW.STONECAPITAL.PT

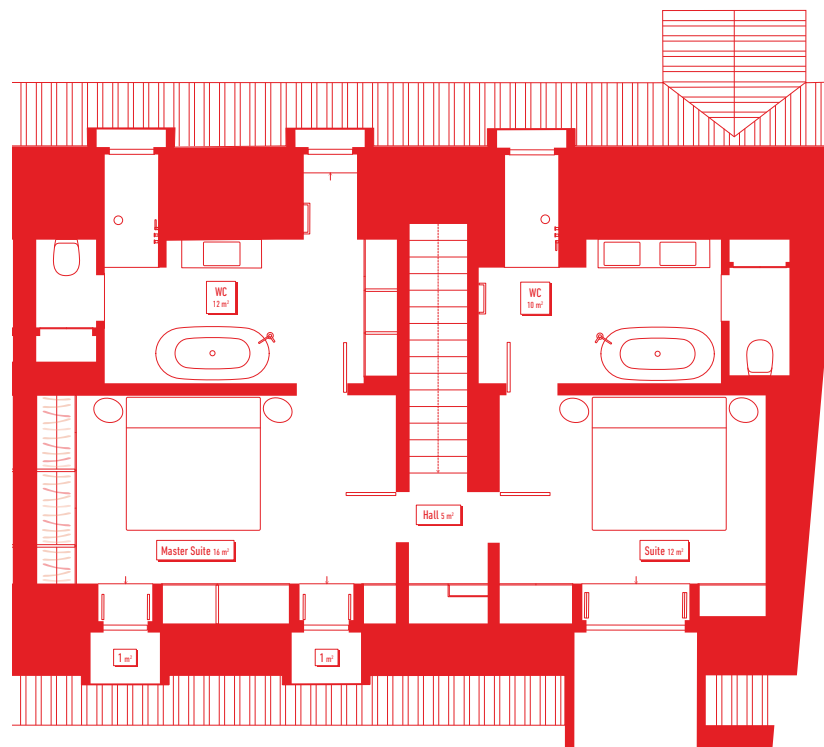


WWW.LIBERTAS.PT

*Areas indicated in the interior of the apartment compartments refer to approximate net areas. Total net area: 157.91 m²

SANTA CLARA

PALÁCIO



5

APARTMENT 14 • T3 DUPLEX • FLOOR 4 & 5

GROSS INTERIOR AREA*
214 m²

PARKING
Yes

EXTERIOR GROSS AREA*
57 m²

STORAGE ROOM
Yes

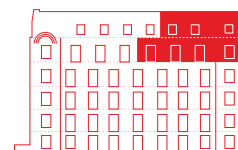
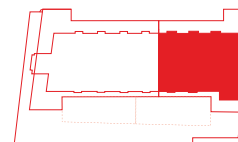
TOTAL AREA*
271 m²

1. Palácio de Santa Clara I
2. Palácio de Santa Clara II
3. Palácio de Santa Clara III

Rua do Paraíso



Tagus River



WITHOUT SCALE

All elements in this document are merely an indication, may be altered and do not hold legally. The developer reserves the right to freely make alterations to the dimensions and equipments in accordance to the technical limitations of the construction. GROSS INTERIOR AREA calculated in accordance to Portuguese Legislation.



WWW.STONECAPITAL.PT



WWW.LIBERTAS.PT

*Areas indicated in the interior of the apartment compartments refer to approximate net areas. Total net area: 157.91 m²